

## U.S. GREEN BUILDING COUNCIL – USGBC

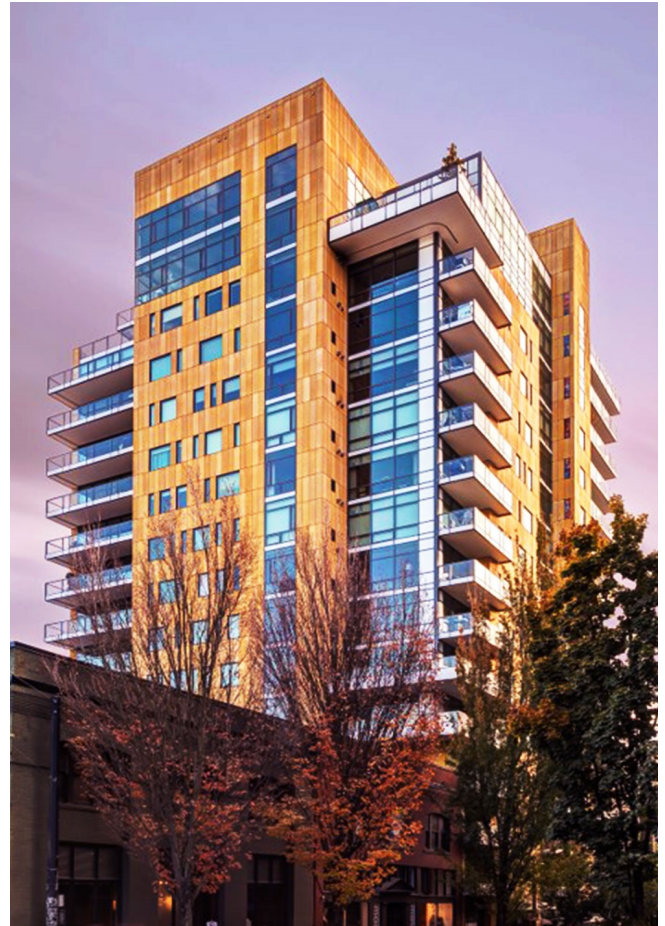
### OPACI-COAT-300® LEED™ v4 & v4.1 – BD+C Point Guide

The Leadership in Energy and Environmental Design (LEED™) Green Building Rating System represents the U.S. Green Buildings Council’s (USGBC) effort to provide a national standard for what constitutes a “green building”. Through its use as a design guideline and third-party certification tool, it aims to improve occupant well-being, environmental performance and economic returns of buildings using established and innovative practices, standards, and technologies.

USGBC or LEED does not certify building products, rather they provide a standard by which a building can be rated and certified as a green building.



OPACI-COAT-300® Project: Mirabella, Portland, OR, USA  
1<sup>st</sup> LEED Platinum Continuing Care Retirement Community



OPACI-COAT-300® Project: The Casey Portland, OR, USA  
1<sup>st</sup> LEED Platinum Highrise Condominium

This document is a tool for architects, specifiers, designers, building owners and other professionals who need an overview of OPACI-COAT-300® and how it may help contribute to a building attaining LEED certification as a green building.

OPACI-COAT-300® is a water-based silicone glass coating that may be used for exterior façade spandrel and interior applications such as glass wall cladding, backsplashes, shower surrounds, marker boards, furnishings, and cabinetry.

Contact ICD High Performance Coatings + Chemistries for additional product information, accredited education, installation guides, and more.

## LEED™ Category: Indoor Environmental Quality (EQ)

### EQ Credit: Low- Emitting Materials

#### CONTRIBUTED POINTS: 1

#### INTENT

To reduce concentrations of chemical contaminants that can damage air quality, human health, productivity, and the environment.

#### REQUIREMENTS

THIS CREDIT MAY APPLY TO BD+C:  
NEW CONSTRUCTION, CORE & SHELL, SCHOOLS, RETAIL,  
DATA CENTERS, WAREHOUSES & DISTRIBUTION  
CENTERS, HOSPITALITY, HEALTHCARE

Use materials in the building interior that meet the low-emitting criteria below. The building interior is defined as everything within the waterproofing membrane.

This EQ Credit covers volatile organic compound (VOC) emissions in the indoor air and the VOC content of materials, as well as the testing methods by which indoor VOC emissions are determined.

#### v.4 SPECIFIC

Healthcare and School project sectors qualify “ceilings, walls, thermal, and acoustic insulation” as a product category submission. OPACI-COAT-300® coated glass contributes as one (1) product category.

#### v4.1 SPECIFIC

Two product categories are required to receive one (1) point. OPACI-COAT-300® coated glass contributes as one (1) product category as “wall panels”.

#### PRODUCT CATEGORY

v4 Specific: Ceilings, Walls, Thermal and Acoustic  
Insulation  
v4.1 Specific: Wall Panels

#### POTENTIAL ICD PRODUCT SOLUTION

OPACI-COAT-300® Water Based Silicone Coated Glass

OPACI-COAT-300 cured on glass will not emit VOCs during or after installation.

Berkeley Analytical, an ISO/IEC 17025 Accredited Laboratory, measured and evaluated the emissions of VOCs from an OPACI-COAT-300® cured sample following CDPH/EHLB/Standard Method V1.2-2017. The results of the test are presented in Berkeley Analytical report, 979-001-01A-Sep0117.



OPACI-COAT-300® Project: Edmonton Health Clinic Academy, Alberta, Canada  
LEED Silver Higher Education

## LEED™ Category: Materials and Resources (MR)

### MR Credit: Material Ingredients

**CONTRIBUTED POINTS: 1**

#### INTENT

To encourage the use of products and materials for which life-cycle information is available and that have environmentally, economically, and socially preferable life-cycle impacts. To reward project teams for selecting products for which the chemical ingredients in the product are inventoried using an accepted methodology and for selecting products verified to minimize the use and generation of harmful substances. To reward raw material manufacturers who produce products verified to have improved life-cycle impacts.

#### REQUIREMENTS

THIS CREDIT MAY APPLY TO BD+C:  
NEW CONSTRUCTION, CORE & SHELL, SCHOOLS, RETAIL,  
DATA CENTERS, WAREHOUSES & DISTRIBUTION  
CENTERS, HOSPITALITY, HEALTHCARE

#### OPTION 1: MATERIAL INGREDIENT REPORTING

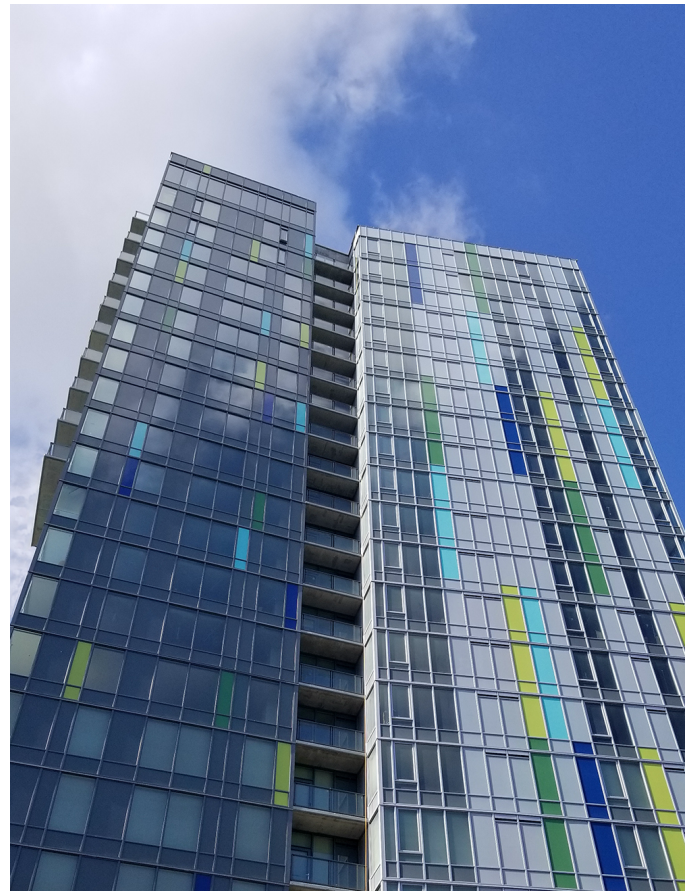
Use at least 20 different permanently installed products from at least five different manufacturers that use any of the qualifying programs that demonstrate chemical inventory of the product to at least 0.1% (1,000 ppm). The specific program OPACI-COAT-300® utilizes is the Health Product Declaration Collaborative®.

This qualifies for both v4 and v4.1.

#### POTENTIAL ICD PRODUCT SOLUTION

OPACI-COAT-300® Water Based Silicone Coated Glass

ICD has published a Health Product Declaration® v.2.1.1 for OPACI-COAT-300®. This Health Product Declaration® (HPD) was completed in accordance with the HPD Standard version 2.1.1, and discloses hazards associated with all substances present at or above 100 parts per million (ppm) in the finished product. Therefore, this HPD is consistent with the LEED v4 and v4.1 MR credit Material Ingredients: Material Ingredient Reporting (Option 1)



OPACI-COAT-300® Project: 620 Terry, Seattle, WA  
LEED Gold Senior Housing

LEED™ Category: Materials and Resources (MR)

MR Credit: PBT Source Reduction – Lead, Cadmium, and Copper

**CONTRIBUTED POINTS: 1-2**

**INTENT**

To reduce the release of persistent, bio-accumulative, and toxic (PBT) chemicals associated with the life cycle of building materials.

**REQUIREMENTS**

HEALTHCARE ONLY – Specify substitutes for materials manufactured with lead and cadmium, as follows

Lead – Specify no use of interior or exterior paints containing lead.

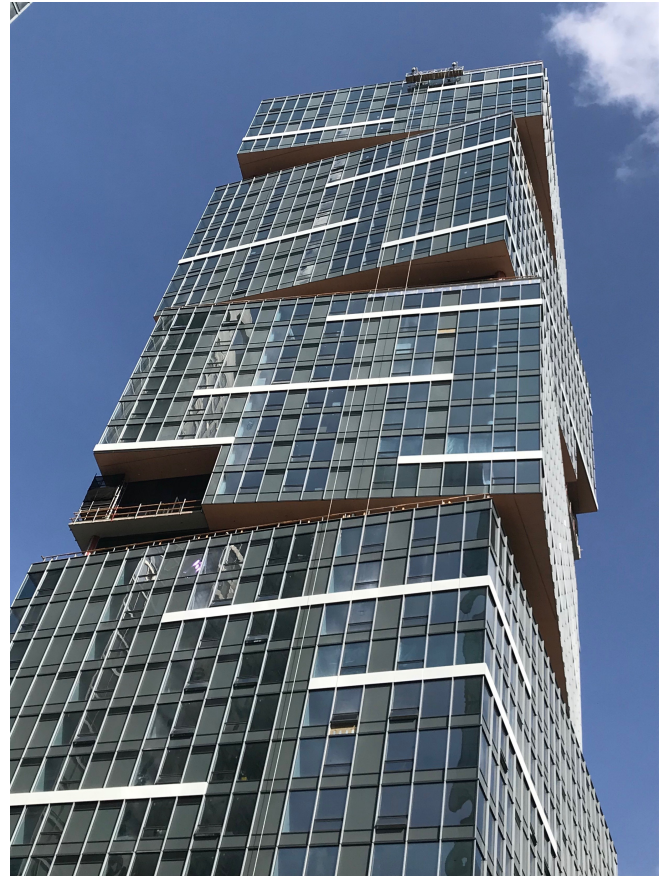
Cadmium – Specify no use of interior or exterior paints containing intentionally added cadmium.

Copper – For copper pipe applications reduce or eliminate joint-related sources of copper corrosion. (This is not applicable to OPACI-COAT-300 because it is a glass coating.)

**POTENTIAL ICD PRODUCT SOLUTION**

OPACI-COAT-300® Water Based Silicone Coating

OPACI-COAT-300® never contains lead or cadmium.



OPACI-COAT-300® Project: Nexus, Seattle, WA, USA  
LEED Gold Rating High Rise Condominium

**ICD HIGH PERFORMANCE COATINGS + CHEMISTRIES**

7350 S. Union Ridge Parkway  
Ridgefield, WA 98642  
Office: 360.546.2286  
Fax: 360.546.2287  
Email: [icd@icdcoatings.com](mailto:icd@icdcoatings.com)  
[www.icdcoatings.com](http://www.icdcoatings.com)

**CONTACT ICD FOR FURTHER INFORMATION**

- Health Product Declaration (HPD) 100ppm
- VOC Compliance Test Documentation
- Accredited Product Education
- Thermal Stress Risk Mitigation White Paper
- Printed & Digital Brochures, and Videos
- Suggested Specifications